

Blue Deal project Tackling Drought Romania



Johan Remijn

19-1-2023



Administrația Națională
"APELE ROMÂNE"



Ministry of Foreign Affairs



Ministry of Infrastructure
and Water Management

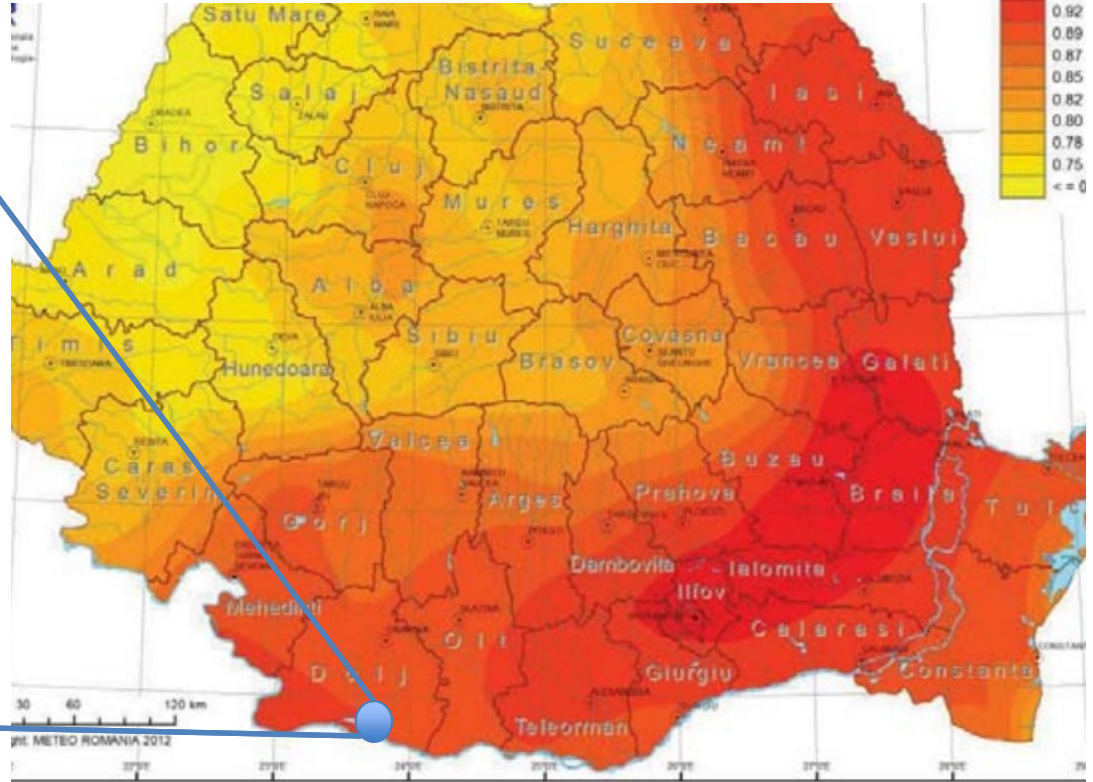
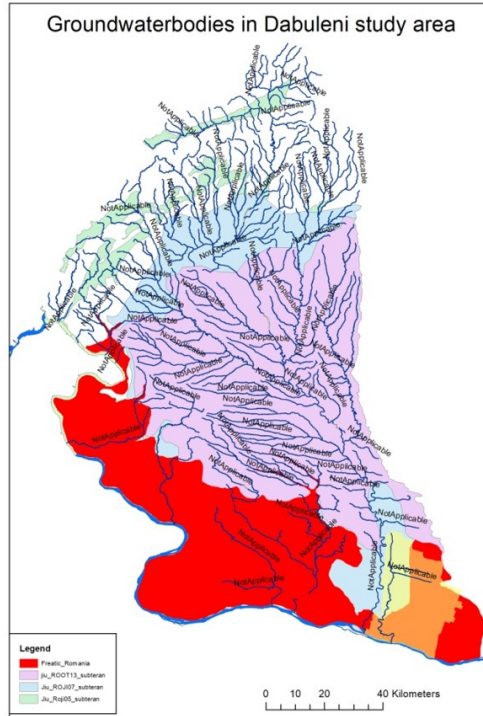
 DUTCH WATER
AUTHORITIES

Blue Deal: 20 miljoen mensen bereiken

- Lange termijn focus 2018-2030
- Focus op kennisuitwisseling
- Bijdrage aan SDG 6.3-6.6
 - Verbetering waterkwaliteit
 - Verhoging efficiëntie watergebruik
 - IWRM
 - Bescherming waternatuur



Gemiddelde temperatuur '01-'30 t.o.v. 1961-1990



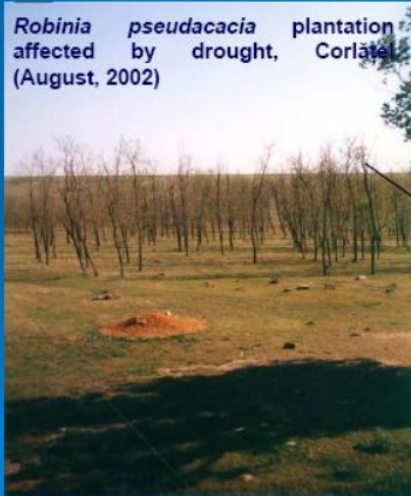
Mobile sand dunes in Oltenia Plain, Ciupercei (August, 1999)



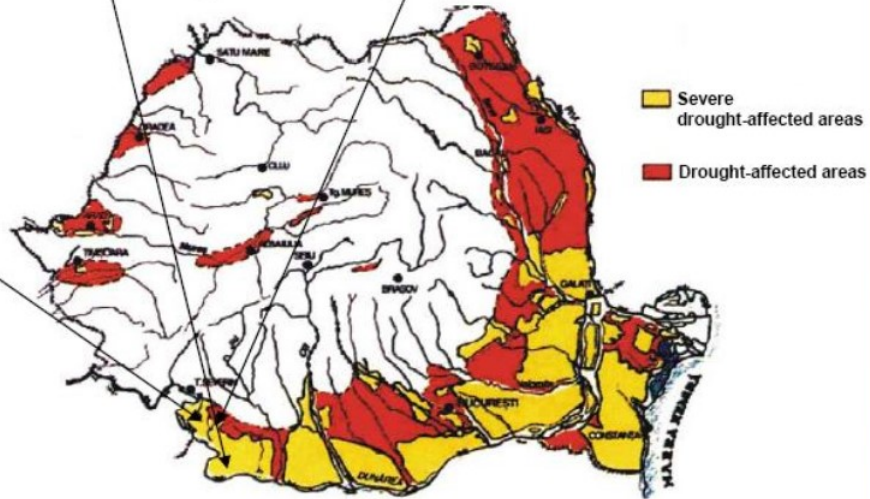
Mobile sand dunes in Oltenia Plain, Danceu (May, 2002)



Robinia pseudacacia plantation affected by drought, Corlătești (August, 2002)



Drought-affected areas in Romania



Problematiek Oltenia Roemenië



Verwoestijning



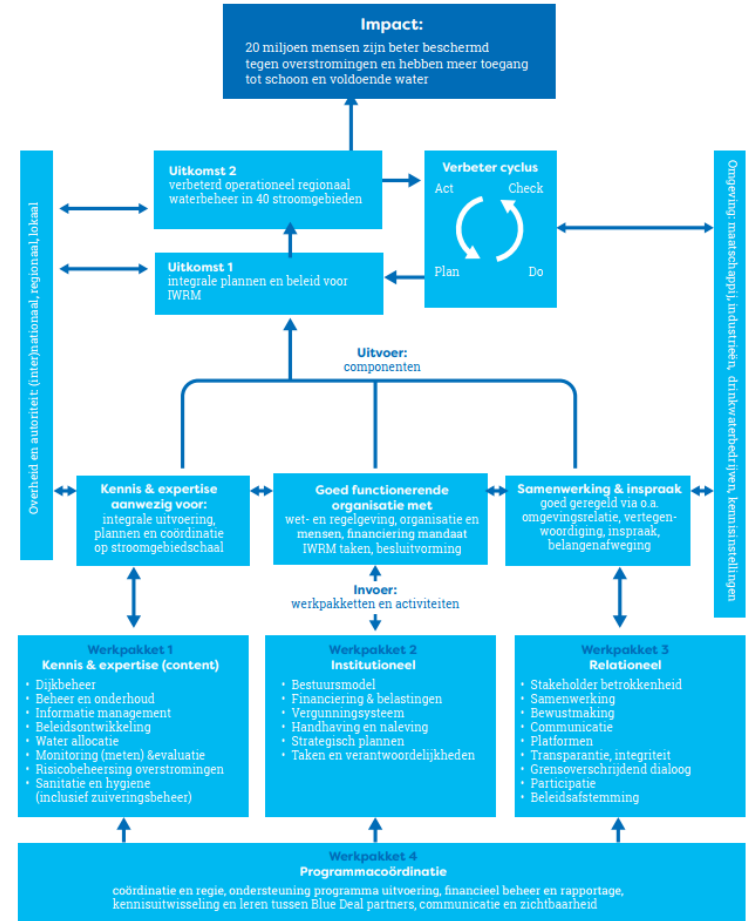
Verziltig

Theory of change

Kader interventies om lange termijn doelen te halen via korte termijn activiteiten

Impact op Oltenia:

- Vermindering droogteschade
- Verbetering duurzame voedselproductie
- Implementatie IWRM



Goed waterbeheer: 3 lagen aanpak

Kennis en
Expertise

Functionerende
organisatie

Relatiemanagement



Kennis en
Expertise



Blue Deal fase I

- Pilot plan droogte
- Hydrologisch model IHE
- Stappen gezet richting Stakeholdermanagement



Irrigatiesysteem

- In verval
- Groot hoogteverschil
Donau - irrigatiegebied
- Niet duurzaam



Pilot plan Dabuleni

- Geïrrigeerd gebied: 54.000 ha
- Plan toekomst: 200.000 ha
- Watervraag verviervoudigd



Gedifferentieerde aanpak

Oranje zone

Kleine boerderijen (39.000 ha)
- herbebossing

Rode zone

Grote boerderijen (49.000 ha)
- Herstel irrigatiesysteem
- Ontwikkeling PPP's voor aanvoer vanuit Donau
- Ontwikkeling droogtebestendige soorten



Relatiemanagement



University of Craiova Horticulture Faculty

Research station Dâbuleni

Influencers

those who exercise (in) formal influence

Factori de influență

Cei care își exercită influența (in)

formală

Administrator of the Protected Area Jiu Corridor

NGO's Nature pilot area

Clean street
water without plastics

Institute Meteorology

Media

Teachers

Electricity Company

Suppliers/performers

those who perform or provide knowledge

Furnizori/executanți

Cei care execută sau furnizează

cunoștințe

Schools

Students from various universities

Know and to inform

A ști și a omforma

Thinking along-advisory

Gândire de-a lungul consilierii

To cooperate-co produce

A coopera – a implica

Input decision making

Contribuția la luarea deciziilor

Decision makers

those who make the decisions

Factori de decizie

aceia care ia decizii

Owners/landowners

Agricultural Commercial Farms
Inhabitantans

Irrigation/Drainage Water Users Associations

Users/customers

those who experience consequences

Utilizatori/consumatori

Cei care se confruntă cu consecințele

Mayors Municipalities
/communes villages

Region Oltenia
HDR-S.V Oltenia

County Coucil Olt
County Coucil Dolj

DWA (NL)

Internal colleague

Mayer Dâbuleni
Water Ministerie
National Administration Romanian Waters

NINWM (NAAR)

Ospa Soil office
Environmental Protection Agency Dolj

Ministerie of Agriculture

Ministerie of Environment
Local Council Municipalitie

River Basin committee Jiu

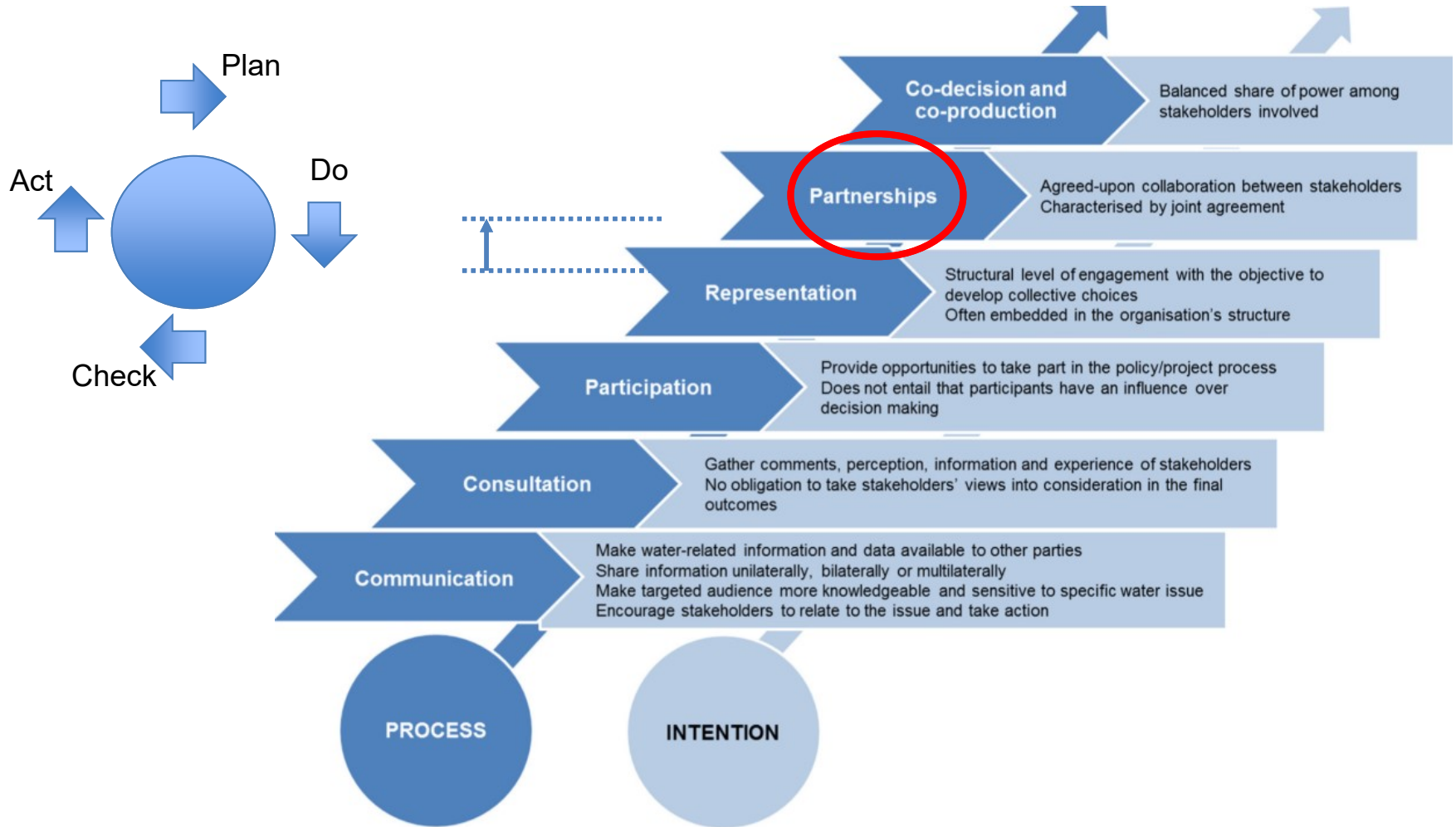
Commercial companies (holdings)

Farmers

National Agency
of Land Reclamation

Drinking water company

Recreation/Tourism

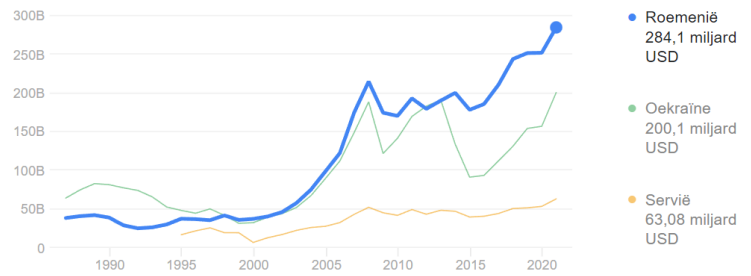




Functionerende
organisatie



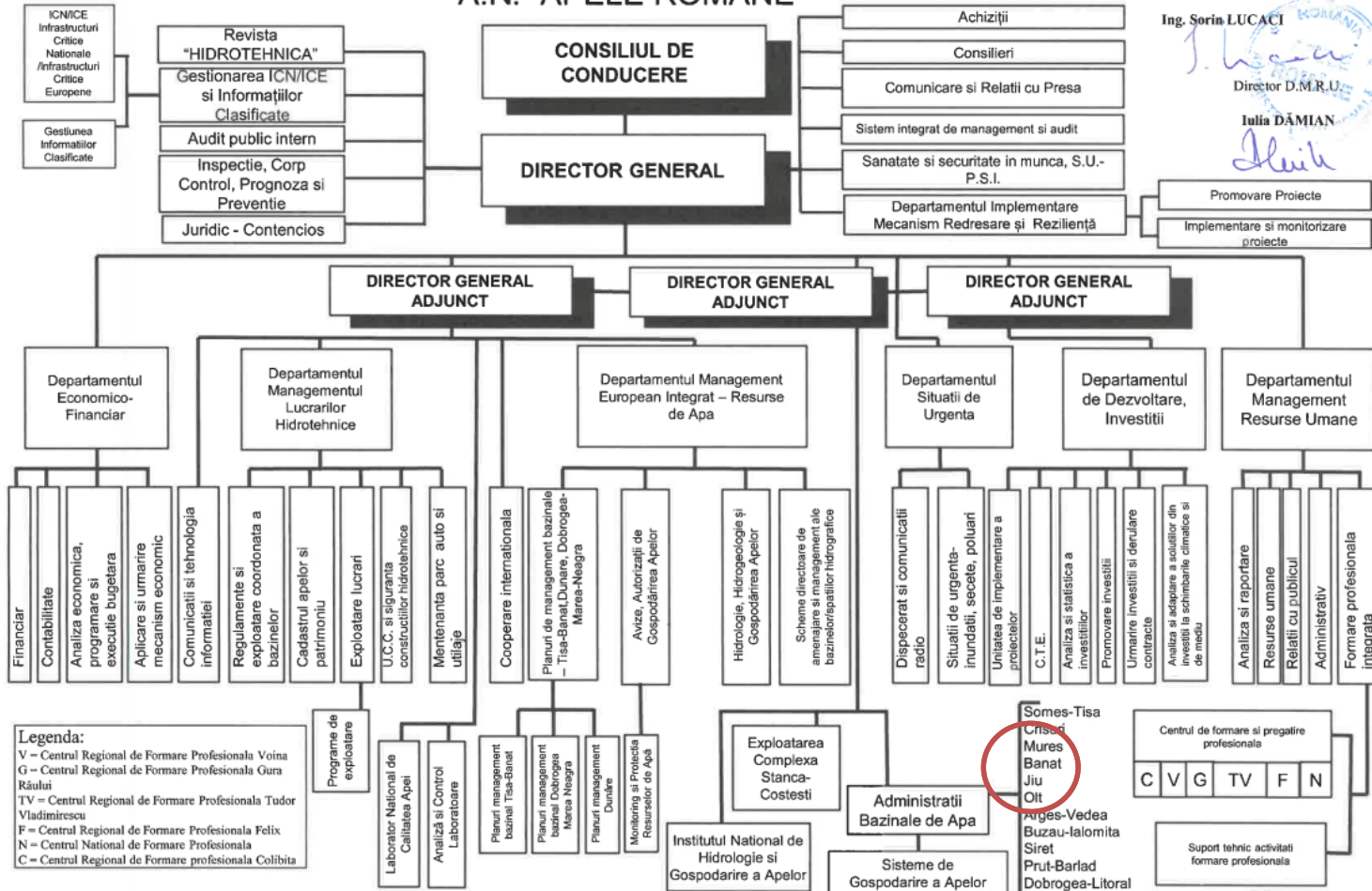
284,1 miljard USD (2021)



Valabil începând cu data de
25.11.2022

ORGANIGRAMA A.N. "APELE ROMANE"

Anexa nr. 1 la Hotărârea Consiliului de Conducere
nr. 28/25.11.2022
Președintele Consiliului de Conducere



Ing. Sorin LUCACI

Director D.M.R.U.

Iulia DĂMIAN

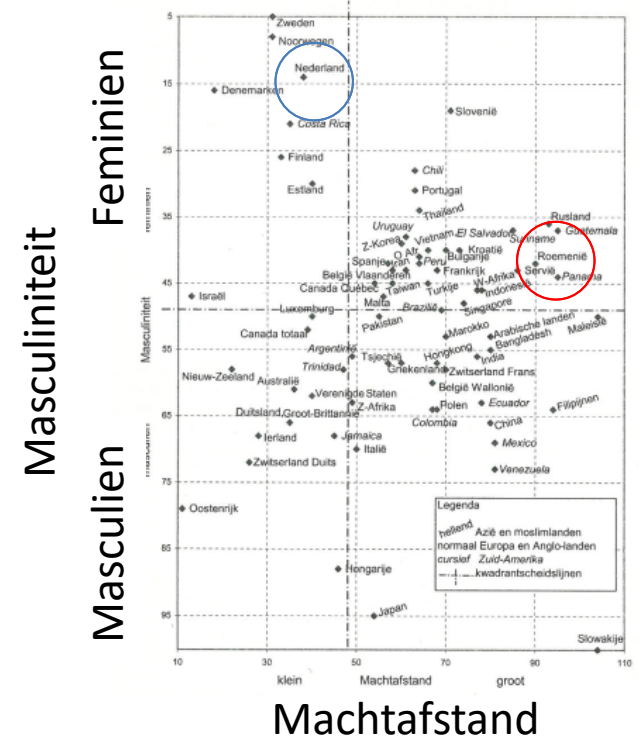
Promovare Proiecte

Implementare si monitorizare proiecte

Indeling districten Apele Romana



Geert Hofstede: culturele verschillen



Conclusies

- Klimaatverandering is aanwezig
- IWRM moet beter
- Samenwerking moet beter
 - Focus op samenwerkingsovereenkomst
 - Masterclass netwerken en samenwerken
 - Training financiering

